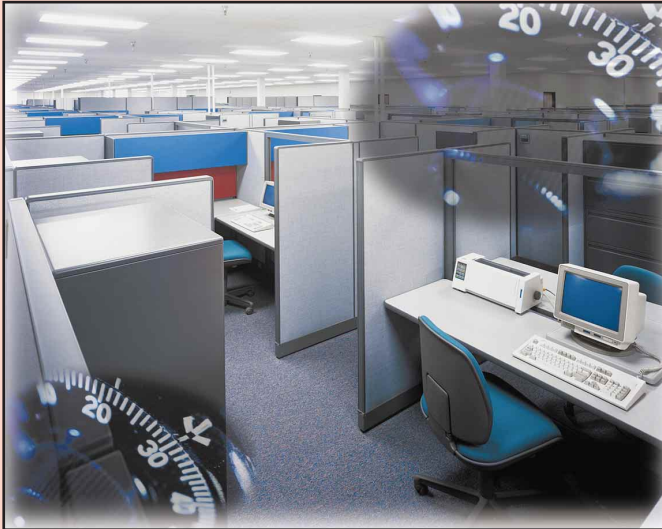


# ACCESS PROJECT SECURITY MANAGER



Finally — The Security Manager You Need for Microsoft® Access 2000 Projects



If you are using Access 2000 Projects with the new MSDE or SQL Server 7 there is no security provided for forms or reports. You only have the limited data security provided by MSDE and SQL Server 7 and no user security.

Without the Access Project Security Manager™ from Database Creations, Inc., you are forced to either create separate application front ends for each group of users or go without proper access.



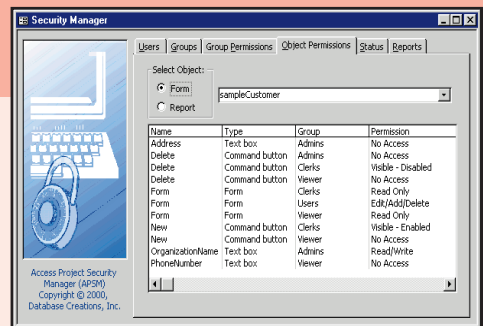
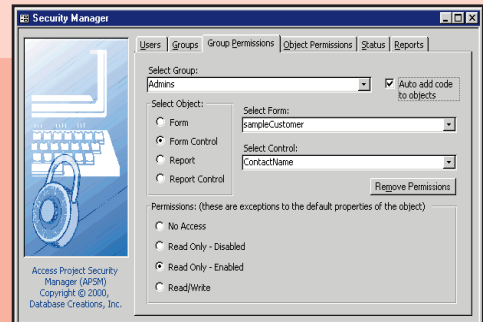
Provides the needed user level security not available in Access 2000 Project databases (.adp/.ade). This new product integrates right into your application. Imagine, using the same form for all users,

limiting what each user can see and do based on your custom security needs. Security is provided for forms, reports and their controls.

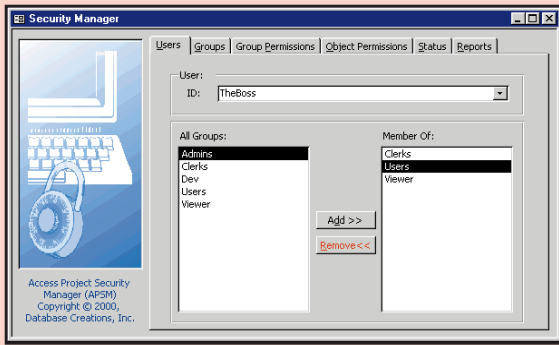
## Introducing the Access Project Security Manager™ (APSM)

### Features:

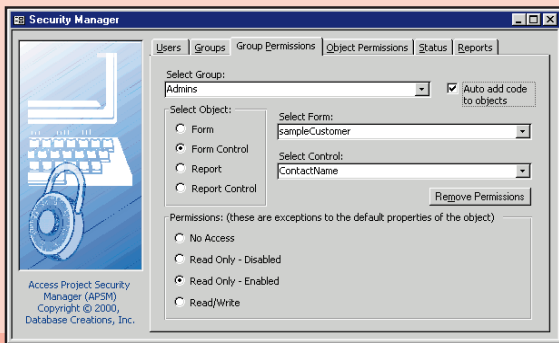
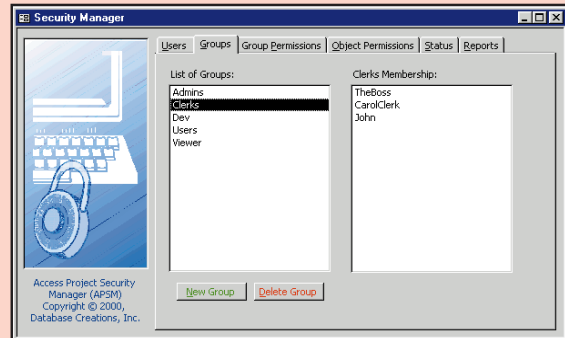
- Integration with the User ID associated with the Microsoft Database Engine (MSDE) or your SQL Server connection
- Provides for user and group management
- Can apply security for controls on forms and reports
- Set permissions for objects including forms and reports. Give each user no access, read only, edit, append, delete, etc.
- Set permissions for controls on forms and reports - no access, read/write, read only, visible, not visible, and more
- Tables are used extensively to drive the interfaces to make customization easy and flexible
- No knowledge of VBA coding is required
- All source code included
- Include in your applications royalty free



**Single Developer — Single Application: \$299**  
**Single Developer — Unlimited Applications: \$499**  
**Unlimited Developers — Unlimited Applications: \$999**

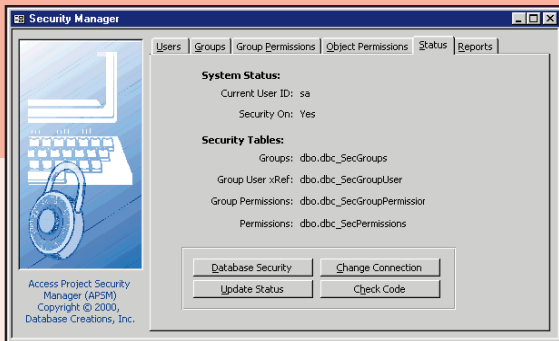
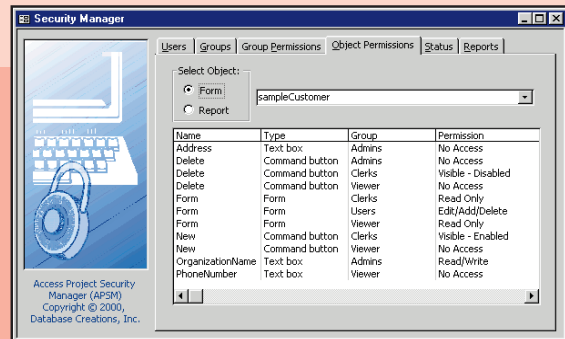


Users belong to groups, and the Groups tab provides the interface to add new groups, and delete existing groups. In addition selecting a group will show a list of users that belong to that group. Once a group has been established, the administrator can set the permissions.



On the Group Permissions tab you set permissions for forms, reports or form/report controls. You can limit who can open the form or report and control what each user can do, and what data fields they have access to. Permissions for forms include: No Access, Read Only, Add Only, Edit Only, Edit and Add, Edit and Delete, Edit/Add/Delete. Permissions for form controls vary depending on the control. Reports and report controls have the permissions: No Access, and Print. The checkbox Auto add code to objects when checked, will add the security VBA code to the appropriate form or report if it is not there.

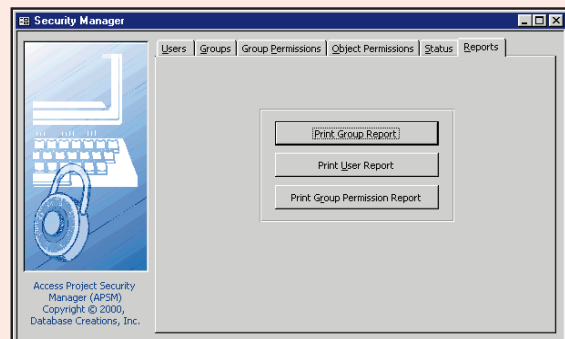
Once group permissions have been established, you can view the permissions for forms and reports on the Object Permissions tab. Choose the type of object and select the object by name from the pull-down list. The control name and type is displayed along with the group names and permissions assigned.

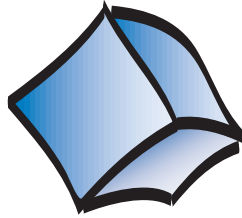


The status tab displays security status, listing of security tables, and other functions. The Database Security button pop's up the SQL Server security dialog box. The Change Connection button displays the Data Link Properties dialog window so you can change the server, database, and the logon user ID. The Update Status button will refresh the tab on the form with the system status and security tables. The Check Code button goes through all forms and reports that have security permissions established and makes sure that the appropriate VBA code is in place to call the security functions when the object is opened.

The Reports tab of the Security Manager provides options to select three different reports. These reports provide documentation for the security system groups, users, and permissions.

To prevent users from bypassing security and gaining access to the security code, the Access Project must be converted to an ADE file after security has been setup. This will remove the ability to go into the design view of forms, reports, and modules. The security tables must also be secured through MSDE/SQL Server.





databasecreations, Inc.

# ORDER FORM

**CALL**   
**(800)**  
**277-3117**

**INTERNATIONAL**  
**860-648-9151**

**FAX**   
**(860)**  
**648-9137**

**MAIL** 

Database Creations, Inc.  
PO Box 669  
S. Windsor, CT 06074

**ON-LINE** 

www.databasecreations.com

## Shipping

All Orders Shipped  
UPS Ground\*

U. S. \$ 7.95

All Other  
Locations \$ Call/Fax

2-Day Shipping\* Available:  
\$15.95 U. S. Only

Please Enter Amount In  
Shipping Section

\*Alaska & Hawaii -

Call for Shipping Costs



All Returns  
Subject To 10%  
Re-Stocking Fee.

## PRICING INFORMATION

Single Developer License	Suite Only	<b>\$395</b>
	Builder Only	<b>\$495</b>
	Both Builder and Suite	<b>\$595</b>
	One EZ Product	<b>\$179</b>
	Surgical Strike™	<b>\$199</b>
	Access Project Security Manager (APSM) - One App	<b>\$299</b>
Site License	APSM Unlimited Applications	<b>\$499</b>
	Suite Only	<b>\$1,995</b>
	Builder Only	<b>\$2,495</b>
	Both Builder and Suite	<b>\$2,995</b>
	One EZ Product	<b>\$995</b>
	Surgical Strike™	<b>\$599</b>
Access Project Security Manager (APSM) - Unlimited Apps	<b>\$999</b>	

## PRODUCT ORDERING INFORMATION

Product	Qty.	Price

## CUSTOMER/SHIPPING INFORMATION

Name \_\_\_\_\_

Company \_\_\_\_\_

Address \_\_\_\_\_

City \_\_\_\_\_ State/Prov \_\_\_\_\_ Zip/Postal \_\_\_\_\_

Country \_\_\_\_\_ Daytime Phone \_\_\_\_\_

E-Mail \_\_\_\_\_ Fax \_\_\_\_\_

Sub-Total	
Sales Tax (CT add 6%)	
Shipping \$7.95/Item UPS Ground	
<b>TOTAL</b>	



Download Demo from:  
[www.databasecreations.com](http://www.databasecreations.com)

## CREDIT CARD INFORMATION

Credit Card Number \_\_\_\_\_

Expiration Date \_\_\_\_\_

Signature \_\_\_\_\_

## PAYMENT METHOD

Check / Money Order Enclosed

Mastercard  Visa  AMEX  Discover