

# The INVENTORY MANAGER

Available for Microsoft® Access 2003, 2002, 2000, and 97

**30 DAY  
MONEY BACK  
GUARANTEE**

**A Fully Customizable Inventory Manager**  
*with Optional Bar Code Module*

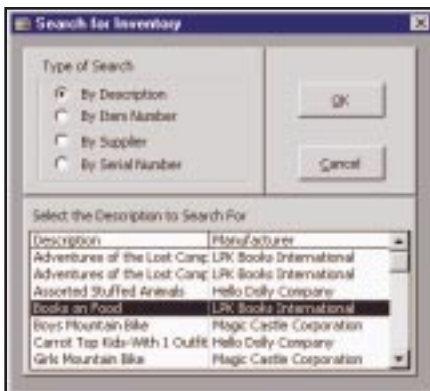
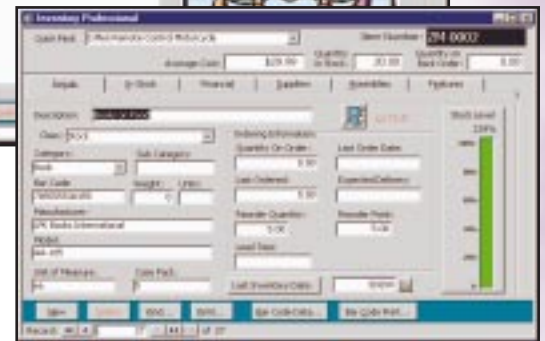


## A New Way to Manage Your Inventory

- Source Code Included - Not Locked In Any Way
- Unlimited Suppliers and Inventory Items
- Multi-User with Unlimited Workstations
- Versions For Access 2003, 2002, 2000, and 97
- Easy To Use - Little Accounting Knowledge Needed
- Innovative User Interface with Simple Icon Metaphor
- Financial Tracking Included
- Professionally Written User Guide
- Plain Paper Reports For All Functions
- Optional Barcode Module

## Features for Today's Business

- Periodic or Perpetual Inventory System
- LIFO, FIFO, or Weighted Average Costing
- Select Default Supplier and Supplier Number
- Keep Track of Manufacturer and Model Number
- Record Barcode and Case Pack Information
- Long Descriptions, Names, and Inventory Categories/Subcategories
- Unique Part Number Identification Checking
- Calculates Amount On Hand, On Order, Back Ordered
- Maintain Information on Pending Shipments
- Display Reorder Point and Quantity Information
- Record Insurance Valuations at Cost and Replacement Cost
- Displays Graph of Stock Usage



## Multi-Purpose Dialogs

- Find Data Quickly With Our Search Dialogs
- Instant Display of Different Search Fields
- Double Click to Go Directly to the Record
- A Different Set of Fields for Each Function
- Each Function Has Several Ways to Search
- Select Just the Reports You Want
- Print More Than One Report At a Time
- Print One Record, Date Range, Single Group
- Control Print Destination and Copies

# PROFESSIONAL INVENTORY FOR ANY BUSINESS

Date	In Stock	+ Inv	- Des	Trans	Balance	Cost	Amount	Operation
10/5/98	0.00	0.00	0.00	0.00	0.00	\$2.99	\$17.94	Add New Item Receipt
10/12/98	0.00	0.00	1.00	0.00	5.00	\$2.99	(\$2.99)	Delete by Stock Item
2/4/99	5.00	0.00	0.00	0.00	11.00	\$2.99	\$17.94	Add New Item Receipt
2/4/99	11.00	3.00	0.00	0.00	14.00	\$2.99	\$5.97	Add New Item Receipt
2/4/99	14.00	0.00	1.00	0.00	13.00	\$2.99	(\$2.99)	Remove Items
2/4/99	13.00	0.00	1.00	0.00	12.00	\$2.99	(\$2.99)	Delete by Stock Item
2/5/99	12.00	3.00	0.00	0.00	15.00	\$3.49	\$10.47	Add New Item Receipt
2/5/99	15.00	2.00	0.00	0.00	17.00	\$2.99	\$5.99	Add New Item Receipt
3/6/99	17.00	0.00	0.00	0.00	17.00	\$3.09	\$3.09	Cost Adjustment
3/29/99	17.00	64.00	0.00	0.00	81.00	\$2.09	\$256.56	Add New Item Receipt
<b>Totals:</b>	<b>\$24.00</b>	<b>\$43.98</b>	<b>0.00</b>				<b>\$179.79</b>	

## Inventory Transaction Log

- View Transaction History for Each Inventory Item
- Displays Adjustments, Transfers, Adds/Deletes of Items
- View All Data, Selected Date Range, or Selected Months
- Search Box Allows You to Select an Inventory Item
- View Date of Transaction and Operation Performed
- View In Stock, Increase, Decrease or Transferred Quantities
- View Cost and Calculated Dollar Amounts
- Calculates Total Increase, Decrease and Transfers Quantities
- Calculates Total Inventory Valuation
- Print Current Record or All Items in Transaction Log

## Track Inventory by Item Receipts

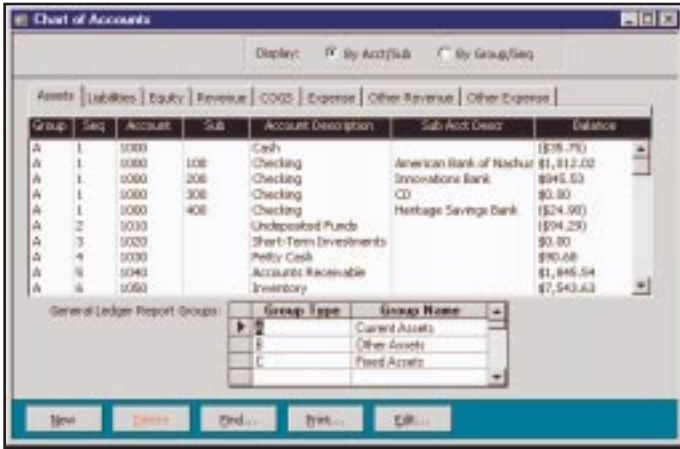
- Each Receipt of Goods is Tracked Separately
- True LIFO, FIFO, or Weighted Average Costing
- Handles Inventory in Multiple Warehouses
- Color, Style and Size Items
- Transfer Stock Between Warehouses or Style/Color
- Manage Multiple Prices for Different Customer Pricing Options
- Maintain Items by Serial Number
- Track Items Made Up of Other Items (Assemblies)
- Enter Default GL Accounts for A/P, Inventory, and Cost of Goods
- Enter and Track New Warehouse Location Information
- Inventory Reconciliation Changes Made To Individual Line Items
- General Ledger Adjustment Screen Lets You Select the Account
- Store Unlimited Length Comments, Pictures, and Video
- Over 40 Inventory Reports including Reconciliation Forms

Date Recd	Orig Recd	Qty in Stock	Cost	Supplier	PO Num	Color	Style	Warehouse
1/12/98	3.00	3.94	\$2.99	3-PC Quads Interm				California Distrib
2/4/99	6.00	6.38	\$2.99	Allen's Toy Compan				California Distrib
2/5/99	2.00	3.08	\$3.89	Hello Soft-Compan				California Distrib
3/2/99	3.00	3.08	\$3.49	Parham Motor Co				

## Keep Track of Your Suppliers and Warehouses

- Separate Forms and Tables for Suppliers and Warehouses
- Track Unlimited Suppliers and their Information
- Categorize Vendors for Reporting Purposes
- Enter Vendors Federal Tax ID for 1099 Purposes
- Maintain Your Credit Information
- Enter Free-Form Comments About Each Vendor
- Maintain Inventory in Warehouses and Transfer as Needed

# DOUBLE ENTRY GENERAL LEDGER AND MORE...

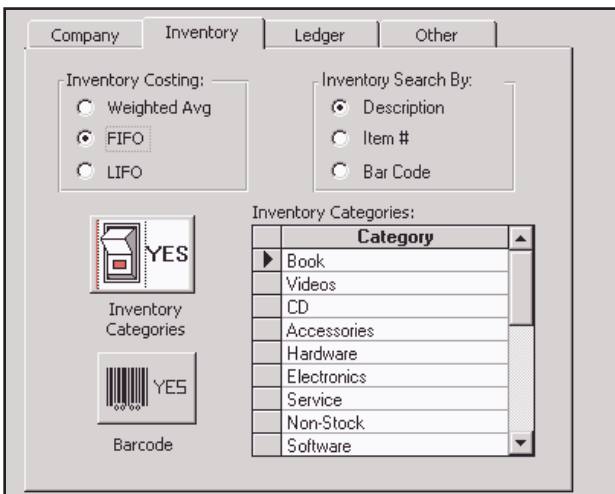
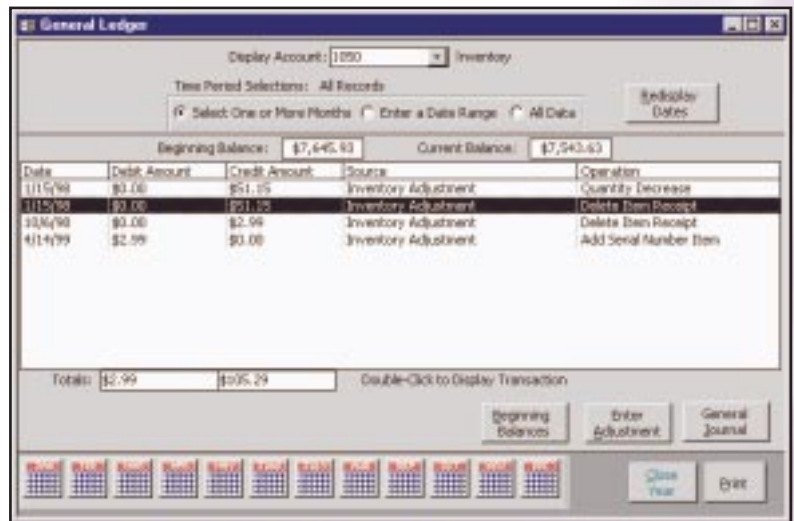


## Customizable Chart of Accounts

- Standard Chart of Accounts With Standard Classifications
- Grouped by Assets, Liabilities, Revenues, Expense, and Equity
- Totally Customizable - Add, Change, Delete Accounts
- Maintain Account and Sub Account Information
- Rollup Subaccounts on Financial Statements
- Define Beginning Balances or Input GL Adjustment Transactions
- Define Unlimited Accounts and Subaccounts
- Use Any Numbering Scheme
- User Definable Groups and Sequences for Financial Statements
- Produce Custom Income Statement and Balance Sheet

## Simplify Your Accounting

- Double Entry General Ledger
- Transactions Posted Throughout System
- General Ledger Posting Can Be Turned Off
- View Transactions By Account and Subaccount
- See Complete Debit and Credit With One Mouse Click
- View General Journal of All Transactions
- Visually Select Transactions Between Date Ranges
- Produce Pre and Post Closing Trial Balances
- Enter General Ledger Adjustments
- Print Financial Statements for any Period
- Customizable Income Statement and Balance Sheet

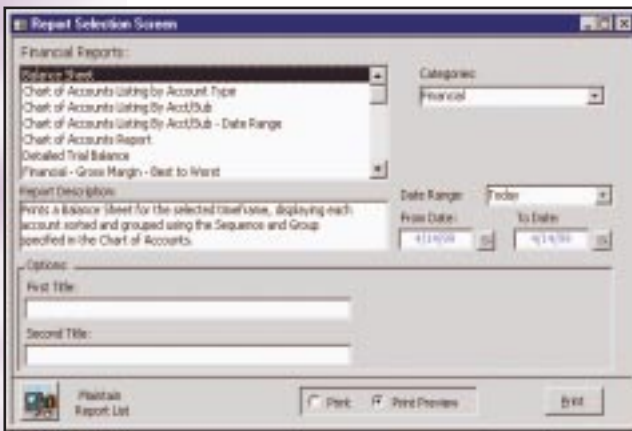


## Control Inventory Setup

- Inventory Setup Controls Many Aspects of Your Business
- Enter Your Company Name, Address and Phone/Fax Numbers
- Select Inventory Costing Method
- Enter Optional Item Categories In User Definable List
- Turn On or Off the General Ledger
- Select Default Chart Of Accounts

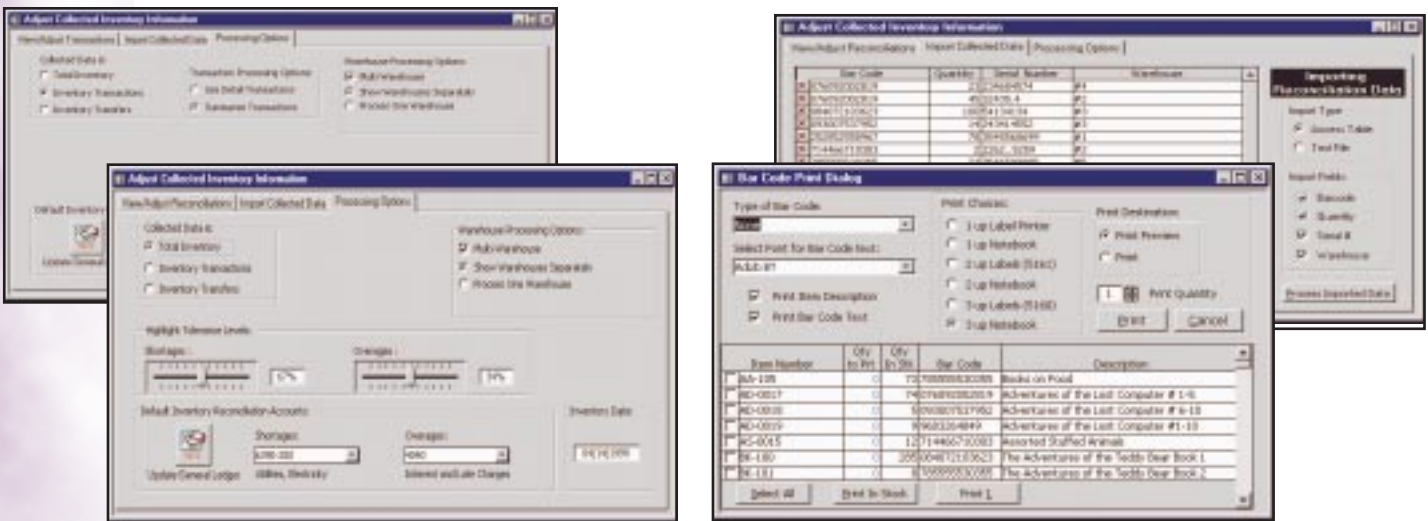
# OVER 50 POWERFUL REPORTS

## User Modifiable Reports



- Easy to Use Tabbed Report Selection Screen
- Select Reports by Category - See Complete Description
- Select Any Period - Day, Week, Month, Quarter, Year, Custom
- Add Your Own Report Titles
- Inventory Reports - In Stock, Low Stock, Out of Stock, Listings
- Supplier Reports - Listing, Print Envelopes, Financial Listing
- Financial Reports - Income Statement, Balance Sheet,
- Inventory Transaction History
- Warehouse Reports - Inventory by Warehouse
- Other Reports - Price Books, Inventory Pricing Levels

# BARCODE YOUR INVENTORY



**Special Package Price  
Only \$2695**

Includes the Inventory  
Manager 4 with Barcode  
Extensions plus...

- SPT Palm-based Scanning Device
- LS1900 Laser Scanner
- Any 1 Azalea Barcode Font
- PenDragon Forms Tool

**Ready to run  
includes  
.pdf user guide and all  
source code!**

- Separate Library File (MDA), Seamlessly Integrates with the Inventory Manager
- Print Barcodes on Labels or Multi Column Notebooks for Quick Lookup and Scanning
- Print Barcode Text and Product Descriptions Above/Below the Barcode
- Warehouse Module Allows You to Collect Data Using a Data Collection Device
- Works with Palm Based Symbol SPT device or any ASCII Based Collection Device
- Automatically Handle Inventory Reconciliations, Adjustments, or Transfers Between Warehouses
- Visual Confirmation of All Updates
- Many Setup Options for Multiple Warehouses and Serialized Inventory
- Reconciliation Incl. Custom Tolerances for Over/Under Condition, Accept/Reject Logic, Audit Trail
- Update Inventory Quantities and Optional General Ledger Interface for Financial Changes

Inventory Manager with Barcode Extensions  
**Only \$995.00** or \$595 without Barcode Extensions

**Download Working Demo**

[www.databascreations.com](http://www.databascreations.com)



# THE LATEST IN BARCODE HARDWARE

## Bar Code Scanners



**LS1900 Laser Scanner**  
By Symbol Technologies  
Laser and CCD Technology In One!  
**Only \$595.00**



**SPT1800** 8MB with Hotsync & Cradle  
By Symbol Technologies  
Barcode Scanning in a Palm Pilot!  
**Only \$1349.00**



**Penwand with Decoder Built-In**  
By ID Technologies  
Self Contained within Compact Wand!  
**Only \$325.00**

## Bar Code Fonts From Azalea

Simple to Use - Just install and select font in any report.  
Examples included for Access and Visual Basic. On-Line help included.



Includes True Type Fonts - does not require DLL's.

Includes all code for Access and Visual Basic users.

UPC Tools-Retail Check-out

C39 Tools-Most Popular for Inventory

I2of5Tools-Creates interleaved 2 of 5 symbol

2of5Tools-Creates non-interleaved  
2 of 5 symbol.

C128Tools-Creates Code 128 symbol

OCR-A/OCR-B-For Optical character  
recognition

## Bar Code Printers



### LabelWriter EL40 - \$249

Prints smaller labels including address and file folder. Prints 12 labels per minute.

Use with any Access Report and any barcode font from Azalea. Includes over 30 templates for price labels, badges, shipping labels and more!

### LabelWriter EL60 - \$299

Use for wider labels including shipping, disk, videos, name badges, and ID Cards. Prints 12 labels per minute.

### LabelWriter Turbo - \$349

Use for wider labels including shipping, disk, videos, name badges, and ID cards. Requires Windows 95 or NT. Prints 12 labels per minute.

Download Working Demo

[www.databasecreations.com](http://www.databasecreations.com)

CALL  
(800)  
277-  
3117



INTERNATIONAL  
860-648-9151

FAX

(860)  
648-  
9137



MAIL



Database Creations, Inc.  
PO Box 669  
S. Windsor, CT 06074  
www.databasecreations.com  
sales@databasecreations.com

# Database Creations, Inc. ORDER FORM

Product	Access	97	or	2000	Price
_____		<input type="checkbox"/>		<input type="checkbox"/>	_____
_____		<input type="checkbox"/>		<input type="checkbox"/>	_____
_____		<input type="checkbox"/>		<input type="checkbox"/>	_____
_____		<input type="checkbox"/>		<input type="checkbox"/>	_____
_____		<input type="checkbox"/>		<input type="checkbox"/>	_____
_____		<input type="checkbox"/>		<input type="checkbox"/>	_____

Visit  
[www.databasecreations.com.com](http://www.databasecreations.com.com)

Total Merchandise \_\_\_\_\_  
Shipping (from left column) \_\_\_\_\_  
Sales Tax (CT Residents Only) \_\_\_\_\_  
**Total** \_\_\_\_\_

## Also Available From Database Creations, Inc.

### Videos and CD Training:

- Visual FoxPro
- Microsoft Access
- Microsoft Office
- Visual Basic
- SQL Server
- TCP/IP

### Add-On Software For:

- Microsoft Access
- Microsoft Office
- Visual Basic
- Microsoft Windows

### Shipping

All Orders Shipped  
UPS Ground

International Orders  
Shipped DHL

U.S. \$7.95/Item  
Canada CALL  
Other Intn'l CALL

2 Day Shipping  
Available:  
Add \$8.00/Item U.S. Only

Please Enter Amount In  
Shipping Section



On-Line Shopping



### Payment Method

- CHECK     MONEY ORDER  
 DISCOVER  
 MASTERCARD    VISA    AMEX

Card Number \_\_\_\_\_  
Expiration Date - \_\_\_\_\_

signature \_\_\_\_\_

### Customer/Shipping Information

Name \_\_\_\_\_ Company \_\_\_\_\_  
Address \_\_\_\_\_  
City \_\_\_\_\_ State/Prov \_\_\_\_\_ Zip/Postal \_\_\_\_\_  
Country \_\_\_\_\_ Phone (Daytime) \_\_\_\_\_  
E-mail \_\_\_\_\_